

**Cherry Red Records**  
**HELLENIC FOOTBALL LEAGUE**  
**Premier Division**



Main Sponsors - Keith Lodge Industrial Roofing

**Saturday 7<sup>th</sup> October 2000**

**V**

**Abingdon United**

*Kick off 3:00 pm*

*Members of Wilts County F.A.*

**Wootton Bassett Town Football Club**  
(founded 1882)  
Gerrard Buxton Sports Ground  
Rylands Way, WOOTTON BASSETT  
Swindon, Wilts

**Tel : (01793) 853880**

Chairman : Paul Harrison  
Vice Chairman : Peter Yeardley  
Secretary : Rod Carter  
Treasurer : Roger Williamson  
Youth Section Secretary : Carol Brady  
Senior Press Officer : Vacant  
1<sup>st</sup> Team Manager : Barry Giles  
1<sup>st</sup> Team Assistant Manager : Malcolm Chivers  
Joint Reserve Team Managers : Pete Yeardley & Paul Burke  
Life Member : Mick Woolford

#### Honours

Wiltshire Senior Cup Winners 1998/99  
Wilts Senior Cup Runners Up 1902/03, 1903/04, 1987/88  
Hellenic Division 1 Cup Winners 1989/90, 1993/94  
Hellenic Division 1 Cup Runners Up 1994/95  
Wilts Div 2 Champions 1984/85  
Wilts Div 1 Champions 1987/88  
Ghia Junior Cup Winners 1983/84  
Ghia Junior Cup Runners Up 1988/89  
Subsidiary Cup Winners 1978/79

## Cherry Red Records Hellenic League

### Premier Division

**Wootton Bassett Town v Abingdon United**

**Saturday 7th October 2000 K.O.3.00p.m.**

*Good afternoon and welcome once again to Rylands Way for today's Premier League fixture. This afternoon we welcome the players, officials and supporters of Abingdon Unttedy who have made the journey from Oxfordshire. We hope they enjoy their vist and that they will join us in the bar after the game. We also wish them a safe return journey.*

*Last week saw us knocked out of the Challenge Cup by Cirencester Academy. I must say I have never seen so much action off the ball as I did last week. It amazes me that players at this level have to resort to these kind of tactics and that we do not see it too often again this season. Disappointngly we managed again to gift two goals and we must learn immediately that we will find ourselves in relegation trouble later in the season for these lapses.*

*Today we host for the first time Abingdon United who will again be a difficult side to beat. We must get back to playing as we did against Harrow Hill and Yate Town.*

*Today we will have Lee Stoddart and "Nulty" Newton back from holiday and hopefully Rich Merchant from trjury. Phil Penning completes his suspension today and will be avallabe for our trip to Swindon Supermartne on Tuesday night.*

*Now the cup has gone will can concentrate securing league points to consolidate our league positon.*

*The reserves travel to Old Woodstock Town today having had a two week break without a game. Next weekend they entertain Letcombe Reserves here kick off 3p.m.*

*Thanks for your support today and to an enjoyable game. Next Saturday the reserves take on Letcombe Res in the first of three home fixtures this month. K.O. 3p.m.*

*Best wishes.*

**Roger**

# CHERRY RED RECORDS

SPONSORS OF THE HELLENIC LEAGUE



## HELLENIC LEAGUE ON THE NET

For full details of results (including scorers),  
fixtures, league tables, club information  
(including directions), bootroom news,  
attendances and guestbook.

**[www.cherryred.co.uk](http://www.cherryred.co.uk)**

(then click on "Football")



Please send in match reports, photo's, club histories etc.  
See FOOTBALL section of our website for details.

# D U G O U T C H A T

*Good afternoon and welcome once again.*

*Last Saturday was a disappointment to me on a number of accounts.*

*One we again defended poorly for the first goal and secondly gave the ball away leading to the penalty award*

*My major disappointment is the standard of refereeing we appear to be having. It appears to me that we are receiving little protection not only away from home but in our own backyard. Some of the incidents last Saturday made me think we were playing down the road at the Rugby club. We may be the new kids on the block but we are entitled to the same protection as all other teams.*

*Enough wining from me and back to today's game.*

*We must pick ourselves up and get back to basics. We must learn when to play with the ball and when to get rid. It is not a difficult game and we must begin to do the simple things correctly.*

*Today I will be looking for the commitment we showed at Highworth and the recent home fixture against Didcot Town. Two sides who will feature prominently at the end of the season and who we more than match in both games.*

*Abingdon will be no different today and a good performance and result will set us up for another difficult game on Tuesday night at Supermarine.*

*Thanks for your continued support and I promise that we will continue to strive to get things right and produce the results your support deserve.*

*Giler*

## Results

Saturday 30th September 2000

### Complete Music Challenge Cup - Preliminary Round

|                         |     |                     |
|-------------------------|-----|---------------------|
| Aston Clinton           | 2-4 | Drayton Wanderers   |
| Cheltenham Saracens     | 1-4 | Bishops Cleeve      |
| Cirencester United      | 3-1 | Ardley United       |
| Didcot Town             | 4-0 | Chalfont Wasps      |
| Easington Sports        | 1-1 | Gloucester United   |
| Engelfield Green Rovers | 4-4 | Wantage Town        |
| Fairford Town           | 3-1 | Middle Barton       |
| Finchampstead           | 1-3 | Brackley Town       |
| Headington Amateurs     | 1-2 | Harrow Hill         |
| Kidlington              | 2-1 | Letcombe            |
| Malmesbury Vics         | 2-0 | Clanfield           |
| Peppard                 | 1-1 | Bicester Town       |
| Prestwood               | 1-3 | Southall Town       |
| Purton                  | 3-1 | Witney Academy      |
| RS Basingstoke          | 3-2 | Harrow Hill Rovers  |
| Swindon Supermarine     | 3-1 | Milton United       |
| Wootton Bassett Town    | 0-2 | Cirencester Academy |

### Premier Division

|                 |     |                  |
|-----------------|-----|------------------|
| Pegasus Juniors | 2-3 | Highworth Town   |
| Tuffley Rovers  | 2-1 | Almondsbury Town |
| Yate Town       | 1-1 | North Leigh      |

### Wednesday 4th October

|                     |     |                  |
|---------------------|-----|------------------|
| Cirencester Academy | 4-2 | Almondsbury Town |
|---------------------|-----|------------------|

# NOT JUST A PASSING PHASE

Soccer is not simply a game -  
it's a science.

With this in mind, the engineers at Gilbert have produced a soccer ball using the latest technology to improve both control and performance. Each ball has 32 panels with sealed silicon seams and is made of a soft touch multi laminar construction.



Official Ball of the  
Hellenic Football League



**TECHNICAL ITALIAN  
SPORTSWEAR**



**GREAT SAVE**  
**S O C C E R**  
Supplies



*Official supplier to the Hellenic Football League*

*Sponsor of the Hellenic Football League  
Errea "Team of the Month" Award  
and the  
Great Save "Safe Hands" Award*

*Call 08700 SOCCER (08700 762237) for a free brochure and prices*



Specialists in team wear.

In-house printing and  
embroidery service for team  
wear and leisure requirements

Active Sports & Outdoor Ltd.  
48 High Street, Wootton Bassett  
Swindon, Wiltshire, SN4 7AQ  
Tel: (01793) 854375

## Chairmans Chat

Good afternoon and welcome to you all and our visitors Abingdon United.

\*\*\*\*\*

Taking a moment to reflect on our beginning to the season I think we can see it shows all the classic symptoms of the challenges that promotion to a higher league presents. Inevitably the pace is just that bit sharper than Div 1, and it is only 10 games in that we are showing we have begun to make that adjustment. Additionally with the floodlights, games have been coming thick and fast, and physically we have also had to adapt to the extra strain on the body. That said, this is an area where the players must take responsibility, ensuring they are better prepared for the rigours of this Division, and not rely on the club to do this. Those that don't take this on are likely to find themselves frustrated by their lack of first team opportunities. At the end of the day though, when you are competing at a realistic level for your talents, success in sport always comes down to desire and from that comes belief. We are beginning to show both - so well done to Barry, the coaching team, the players, and of course you for your support, for getting us this far and long may we continue to express that desire as a club.

\*\*\*\*\*

In reflecting on the start to the season, let us not also forget the Reserves and 3<sup>rd</sup> team who are both fundamental in providing playing opportunities and development for the squad as a whole. Both sides have started the season well, remain undefeated, and are showing all the right attributes for success - desire, belief, fitness and no little ability.

\*\*\*\*\*

Congratulations to Swindon Spitfires ladies team who used our pitch on Sunday 23<sup>rd</sup>, defeating Gloucester Greyhounds 3-1. As those of you who made it down to watch would vouch there were some skilful and thoughtful players, and it showed just how Ladies football is advancing.

\*\*\*\*\*

Here's to a good game today,

Cheers - 'H'

## Forthcoming Fixtures

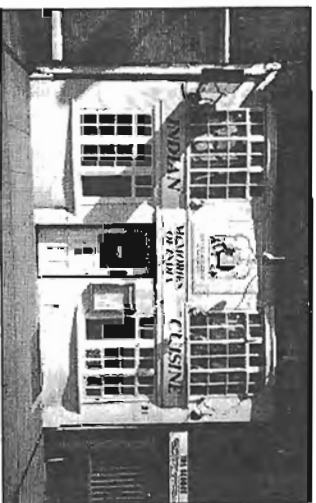
### October

**14th Letcombe Reserves K.O. 3.00**  
**Reserve Div 2 West**

**21st Almondsbury Town Res K.O. 3.00**  
**Reserve Div 2 West**

**31st (Tues) Wantage Town Res K.O. 7.30**  
**Reserve Div 2 West**

## MEMORIES OF INDIA



**FULLY LICENSED RESTAURANT  
AND TAKEAWAY**

*For the premier experience in Indian cuisine*

**FREE HOME DELIVERY SERVICE**

within a five mile radius of Wootton Bassett,  
minimum order £10

Open 7 days a week - including Bank/hols  
Noon - 2.30pm & 6pm - Midnight.

To book a table or to order a takeaway  
please telephone -

Tel : 01793 855455 / 852365

21 HIGH STREET, WOOTTON BASSETT

## C.M.I. Jones & Partner

Dispensing Chemist

*Give the pharmacist - you will be taking good advice*

### OPENING HOURS

MON - FRI 8.45am - 6.45pm  
SAT - 8.45am - 1.00pm  
ALT SUN 11.30am - 12.30pm  
NHS & PRIVATE DISPENSING



- PRESCRIPTIONS DELIVERED TO NURSING & RESIDENTIAL HOMES & TO HOUSEBOUND PATIENTS.
- FAMILY HEALTHCARE
- OXYGEN DELIVERY SERVICE

COMPREHENSIVE SUPPLIES AVAILABLE TO ALL  
SPORTS CLUBS WITH 10% DISCOUNT

102, HIGH STREET, WOOTTON BASSETT

Telephone: 854450

**Players Sponsors**

| <b><u>Player</u></b> | <b><u>Sponsor</u></b> |
|----------------------|-----------------------|
| <i>Simon Jones</i>   | <i>Cathy Fellows</i>  |
| <i>Lee Stoddart</i>  | <i>Abel Alarms</i>    |
| <i>Paul Stoddart</i> | <i>Ashley Vaughan</i> |

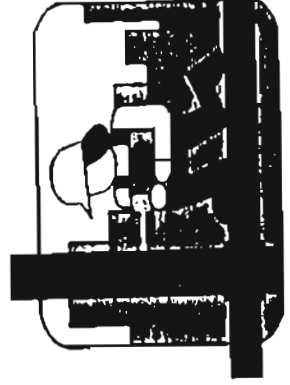
*If you would like to sponsor a players this season, the cost is £40. Please contact the player or a member of the committee if you are interested.*



**E. P. KEOGH  
CONTRACTORS LTD**

**CIVIL ENGINEERING, GROUNDWORKS & FORMWORK**

69 Clifton Street, Swindon, Wilts. SN1 3PY  
Tel & Fax: (01793) 532804 Mobile: (0374) 495739  
Estimating Enquiries: (01793) 850334



# MOUNTSTEVENS

PROUD TO BE LOCAL.

WHY NOT CALL IN TO YOUR LOCAL  
MOUNTSTEVENS - YOU MAY BE  
SURPRISED AT WHAT WE HAVE TO OFFER!

- FRESH CRUSTY BREAD SLICED FOR YOUR CONVENIENCE
- GRANARY, WHOLEMEAL, 3-SEED ALSO AVAILABLE
- FRENCH STICKS, BATONS, CRUSTY ROLLS, BAPS, FINGER ROLLS, BRIDGE ROLLS, SPECIALITY BREADS



- PASTIES, VEGETARIAN PASTIES, SAUSAGE ROLLS
- QUICHES, PIZZA WEDGES, SAVOURY PIES



- DANISH PASTRIES, SCONES, FRUIT BUNS
- FRESH CREAM CAKES, GATEAUX, CHEESE CAKES, FRUIT FLANS, LEMON MERINGUE PIE, DUTCH APPLE PIE

SUITABLE FOR ALL OCCASIONS  
LUNCHEES - BUFFETS - CONFERENCES

## The Cherry Red Records Hellenic League

### Premier Division

|                             | P  | W | D | L | F  | A  | GD  | PTS |
|-----------------------------|----|---|---|---|----|----|-----|-----|
| Highworth Town              | 10 | 8 | 1 | 1 | 30 | 7  | +23 | 25  |
| Swindon Supermarine         | 9  | 7 | 1 | 1 | 19 | 7  | +12 | 22  |
| Didcot Town                 | 6  | 5 | 1 | 0 | 10 | 1  | +9  | 16  |
| Fairford Town               | 7  | 5 | 0 | 2 | 13 | 6  | +7  | 15  |
| Cirencester Academy         | 8  | 4 | 1 | 3 | 18 | 12 | +8  | 13  |
| Tuffley Rovers              | 7  | 4 | 0 | 3 | 11 | 10 | +1  | 12  |
| Bicester Town               | 7  | 3 | 2 | 2 | 9  | 9  | -   | 11  |
| <b>WOOTTON BASSETT TOWN</b> | 10 | 3 | 2 | 5 | 15 | 23 | -8  | 11  |
| Brackley Town               | 4  | 3 | 1 | 0 | 6  | 2  | +4  | 10  |
| Carterton Town              | 4  | 3 | 0 | 1 | 13 | 5  | +8  | 9   |
| Almondsbury Town            | 9  | 3 | 0 | 6 | 11 | 16 | -5  | 9   |
| Shorwood United             | 5  | 2 | 2 | 1 | 13 | 11 | +2  | 8   |
| Yate Town                   | 8  | 2 | 2 | 4 | 9  | 17 | -8  | 8   |
| <b>ABINGDON UNITED</b>      | 5  | 2 | 1 | 2 | 7  | 5  | +2  | 7   |
| Harrow Hill                 | 8  | 1 | 4 | 3 | 9  | 13 | -4  | 7   |
| Cheltenham Saracens         | 9  | 2 | 1 | 6 | 10 | 16 | -6  | 7   |
| Pegasus Juniors             | 8  | 2 | 1 | 5 | 12 | 19 | -7  | 7   |
| Wantage Town                | 8  | 1 | 2 | 5 | 6  | 16 | -10 | 5   |
| North Leigh                 | 8  | 1 | 3 | 4 | 10 | 19 | -9  | 6   |
| Milton United               | 7  | 0 | 1 | 6 | 3  | 19 | -16 | 1   |

Goal Scorers (Lge&Cup)- Stoddart - 10, Patel - 1, Cooper - 1, Parsons - 1, Newton-1, Harper-1

## The Cherry Red Records Hellenic League

### Reserve Division Two West

|                             | P | W | D | L | F  | A  | PTS | GD  |
|-----------------------------|---|---|---|---|----|----|-----|-----|
| Brackley Town               | 3 | 3 | 0 | 0 | 12 | 2  | 9   | +10 |
| Old Woodstock Town          | 3 | 3 | 0 | 0 | 9  | 1  | 9   | +8  |
| Easington Sports            | 4 | 3 | 0 | 1 | 10 | 3  | 9   | +7  |
| <b>WOOTTON BASSETT TOWN</b> | 3 | 3 | 0 | 0 | 7  | 1  | 9   | +6  |
| Almondsbury Town            | 2 | 2 | 0 | 0 | 11 | 1  | 6   | +10 |
| Kidlington                  | 4 | 2 | 0 | 2 | 8  | 7  | 6   | +1  |
| Clanfield                   | 5 | 1 | 1 | 3 | 4  | 11 | 4   | -7  |
| Middle Barton               | 3 | 1 | 0 | 3 | 4  | 5  | 3   | -1  |
| Quarry Nomads               | 3 | 1 | 0 | 3 | 4  | 6  | 3   | -3  |
| Letcombe                    | 3 | 1 | 0 | 2 | 3  | 6  | 3   | -3  |
| Milton United               | 4 | 0 | 1 | 3 | 2  | 10 | 1   | -7  |
| Wantage Town                | 5 | 0 | 1 | 4 | 6  | 26 | 1   | -20 |

Scorers - Jackson -1, Dodd -1, S.Edwards -3, Hyde -1, Cooper -1.





## Fixtures

### Premier Division Saturday 7th October 2000

|                      |   |                     |
|----------------------|---|---------------------|
| Brackley Town        | v | Swindon Supermarine |
| Cirencester Academy  | v | Cheltenham Saracens |
| Harrow Hill          | v | Milton United       |
| Highworth Town       | v | Fairford Town       |
| North Leigh          | v | Almondsbury Town    |
| Pegasus Juniors      | v | Tuffley Rovers      |
| Wootton Bassett Town | v | Abingdon United     |
| Yate Town            | v | Wantage Town        |

### Reserve Division Two (West)

|                    |   |                      |
|--------------------|---|----------------------|
| Old Woodstock Town | v | Wootton Bassett Town |
|--------------------|---|----------------------|

### Tuesday 10th October 2000

#### Premier Division

|                     |   |                      |
|---------------------|---|----------------------|
| Abingdon United     | v | Bicester Town        |
| Almondsbury Town    | v | Harrow Hill          |
| Didcot Town         | v | Highworth Town       |
| Milton United       | v | Carterton Town       |
| Swindon Supermarine | v | Wootton Bassett Town |
| Wantage Town        | v | Cirencester Academy  |

### Wednesday 11th October 2000

#### Premier Division

|                     |   |                 |
|---------------------|---|-----------------|
| Cheltenham Saracens | v | Tuffley Rovers  |
| Fairford Town       | v | Yate Town       |
| Shortwood United    | v | Pegasus Juniors |

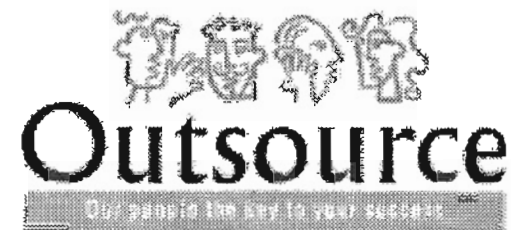
### Saturday 14th October 2000

#### Reserve Division 2 West

|                      |   |          |
|----------------------|---|----------|
| Wootton Bassett Town | v | Letcombe |
|----------------------|---|----------|

### Tuesday 17th October 2000 Premier Division

|                  |   |                      |
|------------------|---|----------------------|
| Almondsbury Town | v | Wootton Bassett Town |
|------------------|---|----------------------|



Supporting local FOOTBALL

Created more than nine years ago, Outsource UK Limited has become the principal Information Technology recruitment agency in Swindon. We provide the complete IT recruitment solution within the local region.

Contact us at :-

**Outsource UK Ltd**  
First Floor  
Market Centre  
The Square  
Swindon  
SN1 3EB

Telephone: 01793 430021  
Fax: 01793 432337  
E-mail: [admin@outsource-uk.co.uk](mailto:admin@outsource-uk.co.uk)  
Website: [www.outsource-uk.co.uk](http://www.outsource-uk.co.uk)



## G & P (Cases) Ltd.

Richmond Works, Station Road,  
Wootton Bassett, Swindon,  
Wilts. SN4 7EA

*Pallets - Timber & Plywood Case Manufacturers*

*Corrugated Case Specialists*

*Export Packers*

**Tel: (01793) 852156**

**Fax: (01793) 848641**

*Brinkworth House*  
BUSINESS CENTRE

For Your Executive Offices

Full Secretarial Service  
Suites from 150 sq. ft. to 5,000 sq. ft.

&  
Opposite Brinkworth Golf Club

**FREEPHONE 0321 510 866**

Brinkworth House, Brinkworth, Nr. Swindon SN15 5DF



## ABINGDON CLUB HISTORY

The club was formed in 1946 when a group of ex-service men decided that the town could support two football clubs. The first meeting to form the club was held in the local Anchor Public House on the bank of the River Thames, as there were no club facilities. They joined the North Berks League and within two seasons had won its Charity Shield. The following year 1953/54 they won the league and cup finalists.

The club had its sights on higher things and five years later entered the Hellenic League. Since then it has remained in this league and during this time had success in the lower divisions. In 1965/66 they won the Division One Challenge Cup and the following season were the cup finalists.

No further honours came the clubs way until winning promotion in 1976/77 to the Premier Division. After a struggle at this level, relegation back to Division One came after four seasons. With a more ambitious approach, the club bounced back into the Premier League where it has remained ever since. It also won the Division One Cup in the same promotion year. Senior status was achieved in 1985 allowing it to be eligible for the F.A. Vase, County Senior Cup and in 1989 entered the F.A. Cup for the first time.

A Members Room, Function Room, Covered Stand and Floodlighting have been completed in recent years to improve the off pitch facilities.

1996/97 has seen the club complete its 50th season and its most successful. United won the final of the Berks and Bucks Senior Trophy and also winning the League's Floodlit Cup. The highest ever league position was attained when finishing as Runners Up in the Hellenic Premier Division. The following season again saw success come to Northcourt Road with retaining the County Senior Trophy, Hellenic League Reserve Championship and Allied Counties Youth League winners.

ABINGDON UNITED F.C.  
SEASON 2000/01

Simon Tricker Age 25-Goalkeeper-Fifth year with United after signing from Burnham. Good shot stopper, reliable hands.

Wayne Harbert Age 23-Midfield-Second season with United.Busy player with an eye for goal.

Mark Simms Age 20-Forward. Ex youth player with the club.Good left foot. Forced himself into the squad with his pace and tricks.

Mark O'Hara-Age 32-Player of all positions. Resigned for United after brief spell with Brackley Town.Reads the game well.

Wayne Morton-Age 30-Defender. Tall, strong , honest player. Able to score goals during the season from the back.

Robbie McNeill -Age 33-Midfield. Club's captain who is an example to those at Northcourt Road. Hard working player with good engine.

Danny Riley Age 20 -Defender. Product of United's Youth Policy. Tall strong honest player-still learning.

Philip Van De Mortel Age 17-Midfield. Youth player,who has broken into the squad.Confident play maker still developing.

ABINGDON UNITED F.C.  
SEASON 2000/01

Carl Wilkins Age 27-Goalkeeper.Signed from Milton United. Tall demanding keeper with reliable hands.

Chris Watkins Age 23-Wing-back. Signed from AFC Wallingford. Player with good left peg with vision on the ball.

Ian Smith Age 23- Defender. Rejoined United after one season away.Honest all round player giving 100%.

Chris Hooper Age 22-Midfield.Pre-season capture from Milton. Player comfortable on the ball, with use of either foot.

Nathan Smith Age 23-Defender.Young player who reads the game well and looks comfortable with the ball.

Shaun Smith Age 27-Midfield. Tough tackling player. Strong runner from those midfield areas.

Ricky Barrett Age 18-Midfield. Product of youth policy. Good touch on the ball, strong runner from midfield.

Jason Maciak Age 24 -Forward. Recent signing from Thame. Quick feet, natural goal scorer around box.

### Club Results Round Up

- ✔ Firsts lost to Ciren Acad last Saturday in the League cup 0-2
- ✔ Reserves had no game
- ✔ 'A' team won 1-0 away at Highworth KQ
- ✔ Under 18's lost away to Highworth 2-3 on a wet and windy Tuesday.
- ✔ Under 17's don't start until November
- ✔ Under 16's had no game
- ✔ Under 15's had no game
- ✔ Under 14's had no game
- ✔ Under 13's lost away to Stratton 0-3, although the team played some really good football but failed to get the goals
- ✔ Under 12's had us biting our nails, letting in 2 goals in the final 10 minutes, but held on to win 3-2 at home against Wroughton
- ✔ Under 11's won 5-0 against Shaw, with goals from Tearle, Toomey, Aitkenhead, Marchment and Wason
- ✔ Under 10's had no game
- ✔ Under 9's lost 0-7 to Greenmeadow Colts
- ✔ Under 8's had no game

### Club News/Requests

- If you get a chance try and make it along to one of our U11's games (Sun afternoons), if for nothing else than to take a look at the excellent program produced by manager Mark Smedly. The program actually won the Wirral Club Junior program of the year last season, and in my view has been improved on this season.
- The club urgently require manager and assistants for the under 15's side, which may need to pull out of the League for this season if no-one is forthcoming.

\*\*\*\*\*

Can you help our football club ??

The football clubs primary aim is *"To promote and develop football within Wootton Bassett through the provision of playing opportunities for as many age groups as possible, and the maintenance of a senior team and stadium in keeping with the Town's stature."* . The club is growing as it works towards this goal. Can you help by offering assistance to the club in it's facilities maintenance, matchday hosting, program production or pitch preparation ?

# BIOFLOW®

## NATURAL PAIN RELIEF WITHOUT DRUGS

BIOFLOW A THERAPIST ON YOUR WRIST

AS FEATURED IN THE NATIONAL PRESS & ON BBC BREAKFAST TV

### Magnetotherapy for people and pets



Neither Sheila or Oscar need painkillers anymore. They wear their Bioflows and they both enjoy quality life again

AGENTS WANTED - PART/FULL TIME

60 DAY MONEY BACK GUARANTEE -

**Only £29.99**

Tel : 01666 510661

# WEST END CATERING

WE PURCHASE ALL SURPLUS NEW AND USED  
CATERING EQUIPMENT AT COMPETITIVE PRICES

Bain, Marles, Chippers, Fryers, Grills, Griddles,  
Mixers, Peelers, Ranges, and Refrigeration.

**YOU NAME IT WE WILL BUY IT  
FROM SINGLE ITEMS TO COMPLETE KITCHENS**

**CASH PAID ON COLLECTION**

**TELEPHONE: 01666 510233 / 0850 447480**

# WOOTTON BASSETT TOWN FC

Season 2000/2001

Richard STEVENS  
Position: Goalkeeper  
DOB:

Previous Club: Marlborough Town  
Rich played his first full season for the Club last year and proved to be an asset to the Club with his consistent performances.

Darryl SIMMS  
Position: Goalkeeper  
DOB:  
Previous Club: Swindon Supermarine  
A summer signing and an excellent prospect who has shown well in pre-season fixtures. Looks to have a bright future.

Philip PENNING  
Position: Defence/Midfield  
Previous Club: Calne Town  
DOB:  
Previous Club: Calne Town  
Good all round defender who reads the game exceptionally well.

Jason EDWARDS  
Position: Defence/Midfield  
DOB:  
Previous Club: Swindon Supermarine  
Jason has returned to Club this year after a brief spell with Marine. Has shown well in pre-season fixtures.

Paul HARPER  
Position: Defence  
DOB:  
Previous Club: Lambourn Sports  
Missed only one game last season. Excellent passer of the ball and the "deadball" specialist.

Paul DAVIS  
Position: Central Defender  
DOB:  
Previous Club: Pewsey Vale  
Very strong defender who, but for a brief spell with Western League side Pewsey Vale, has played all his senior football for the Club.

Simon GREEN  
Position: Defence  
DOB:  
Now in his fifth season with the Club and still performing well. Missed very few games last season.

Lee MARSHALL  
Position: Defence  
DOB:  
Previous Club: Cricklade Town  
Summer signing. Strong imposing central defender.

Ben PARSONS  
Position: Midfield  
DOB:  
Previous Club: Purton  
A well balanced hard tackling left sided player who is a welcome addition to the squad this year.

Paul PATEL  
Position: Midfield  
DOB:  
Previous Club: Highworth Town  
Hard working and tenacious left sided midfielder player.

Richard MERCHANT  
Position: Midfield  
DOB:  
Previous Club: Fairford Town  
Third season with the Club. Strong attacking midfielder player.

Bryan WOOD  
Position: Defence/Midfield  
DOB:  
Previous Club: Purton  
Second season with the Club. A player who adds balance to the left side of the team.

Lee STODDART  
Position: Forward  
DOB:  
Lots of pace to trouble defenders and a goal scoring record to match. Top scorer with 18 goals last season.

Jeremy NEWTON  
Position: Forward  
DOB:  
Previous Club: Gloucester City  
Highly skilled front runner who has the ability to run defences ragged.

Roger SMITH  
Position: Forward  
DOB:  
Previous Club: Malmesbury Victoria  
Deceptively skillful player who has a keen eye for goal.

## THE PROFESSIONALS IN REFRIGERATION

ALL MAKES REPAIRED  
AND SERVICED



- \* Sales Service & Repairs
- \* All Work Guaranteed
- \* Commercial & Domestic
- \* Same Day Service
- \* C.I.T.B. Approved. C.F.C. Recovery



ARCTIC SERVICES

24 HOUR  
EMERGENCY  
SERVICE

01793 848502

23 Coxstalls, Wootton Bassett

Cherry Red Records Hellenic League

Reserve Division Two West

|                 |                    |   |                                 |
|-----------------|--------------------|---|---------------------------------|
| 2nd Sept        | Quarry Nomads      | A | 1-0 (Jackson)                   |
| 9th Sept        | EASINGTON SPORTS   | H | 2-1 (S.Edwards, J.Dodd)         |
| 16th Sept       | Brackley Town      | A | P-P                             |
| 23rd Sept       | CLANFIELD          | H | 4-0 (S.Edwards 2, Hyde, Cooper) |
| 7th Oct         | Old Woodstock Town | A |                                 |
| 14th Oct        | LETCOMBE           | H |                                 |
| 21st Oct        | ALMONDSBURY TOWN   | H |                                 |
| 31st Oct (Tues) | WANTAGE TOWN       | H |                                 |

# CHERRY RED RECORDS

## THE VERY BEST OF FOOTBALL MUSIC ON CD



**ARSENAL**  
Good Old Arsenal



**CELTIC**  
Hair Hair Celtic!



**CHELSEA**  
Blue Flag



**COVENTRY**  
The Sky Blues



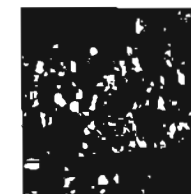
**EVERTON**  
Forever Everton



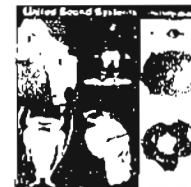
**IPSWICH**  
Singing The Blues



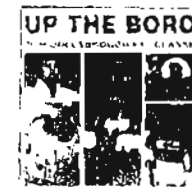
**LEICESTER**  
Fubot Street Blues



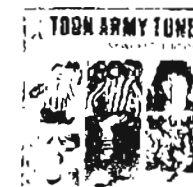
**LIVERPOOL**  
This is Anfield



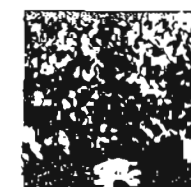
**MAN. UTD.**  
United Sound Systems



**MIDDLESBROUGH**  
Up The Boro!



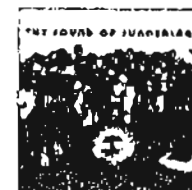
**NEWCASTLE**  
Toon Army Tunes



**RANGERS**  
Ibrox Anthems



**SOUTHAMPTON**  
Super Saints



**SUNDERLAND**  
Mackem Music



**TOTTENHAM**  
Glory Glory, Tottenham Hotspur



**WEST HAM**  
Forever-Blowing Bubbles

All Club releases are full length albums. Each one contains between 13 and 24 tracks. Clubs also available in this series include ABERDEEN, BIRMINGHAM, BURNLEY, CRYSTAL PALACE, DERBY, FULHAM, HEARTS, HIBERNIAN, KILMARNOCK, LIVERPOOL - THE KOP CHOIR, LIVERPOOL - YOU'LL NEVER WALK ALONE, MAN CITY, NORWICH, NOTTS FOREST, QPR, RANGERS - THE FAMOUS GLASGOW RANGERS, SHEFFIELD WEDNESDAY, SOUTHAMPTON, SCOTLAND, SUNDERLAND - ROYAL ROYAL, TOTTENHAM - CUP KINGS, WIMBLEDON and JAMAICA.

ALL CD'S £9.95 including postage. Add 50p for Europe and £1.00 Rest Of The World. (Selected titles also available on cassette.)

CREDIT CARD HOTLINE 020 7371 3644 E-Mail: info@cherryred.co.uk

Make cheques payable to CHERRY RED RECORDS LTD and send to Cherry Red Records, 1st Floor Unit 17, Llynnon Lane West, 126-128 New King's Road, London SW6 4LZ.

[www.cherryred.co.uk](http://www.cherryred.co.uk)



# Wootton Bassett Town FC

By order of Wiltshire County FA  
ALCOHOL of any description is **NOT**  
permitted within the confines of the ground

Failure to comply with the order issued  
by Wiltshire County FA could lead to a charge of:

“Bringing the game into disrepute”

being instigated against this Club by the County FA

Wootton Bassett Town would like to thank  
our sponsors to date for this season :-

*First Team – Keith Lodge Roofing*

*Reserves – Keith Lodge Roofing*

*A Team – West End Catering*

*Under 17's & 18's – EP Keogh*

*Under 16's – Brinkworth Business Centre*

*Under 15's – TBA*

*Under 14's – Tim Rust Builders*

*Under 13's – Swindon Skips*

*Under 12's – Banbury Garden Centre*

*Under 11's – Memory Corporation*

*Under 10's – CW Office Furniture*

*Under 9's – TBA*

*Under 8's – M&E Water*

*Equipment - Active Sports and Outdoor*

*Matchday food - Mountstevens Bakery*

and all advertisers within this program and groundside

If your company would like to advertise with the club, either in the program (£35 , £60 or £100 for qtr, half or full page) or through ground side boards (£100 + cost of board), or would like to sponsor a team kit, warm up tops, players kit (£40), matchball (£25) or match (£10), then please contact the Chairman, Paul Harrison on 850298 (hm) or 884225 (wk).



## Wootton Bassett Town

FROM :-

|                 |     |
|-----------------|-----|
| Richard Stevens | [ ] |
| Darryl Simms    | [ ] |
| Phil Penning    | [ ] |
| Paul Davis      | [ ] |
| Lee Marshall    | [ ] |
| Jason Edwards   | [ ] |
| Rich Merchant   | [ ] |
| Paul Patel      | [ ] |
| Andy Brien      | [ ] |
| Jeremy Newton   | [ ] |
| Lee Stoddart    | [ ] |
| Paul Harper     | [ ] |
| Simon Green     | [ ] |
| Bryan Wood      | [ ] |
| Nathan Hall     | [ ] |
| Ben Parsons     | [ ] |
|                 | [ ] |
|                 | [ ] |

Manager-Barry Giles

## Abingdon United

FROM :-

|                |     |
|----------------|-----|
| Carl Wilkins   | [ ] |
| Danny Riley    | [ ] |
| Chris Watkins  | [ ] |
| Philip Van De  | [ ] |
| Mortel         | [ ] |
| Wayne Morton   | [ ] |
| Nathan Smith   | [ ] |
| Robbie McNeill | [ ] |
| Wayne Harbert  | [ ] |
| Chris Hooper   | [ ] |
| Jason Maciak   | [ ] |
| Mark Simms     | [ ] |
| Nigel Swafford | [ ] |
| Neil Drewitt   | [ ] |
| Ian Smith      | [ ] |
| Simon Tricker  | [ ] |
|                | [ ] |
|                | [ ] |

Manager-Ray Hayward

**Today's Match Sponsors - Keith Lodge Industrial Roofing**

### The Men In Black

Referee

Mark Weetman (Witney)

Assistants

Keith Davies (Sonning)

Terry Coates (Reading)

### Next Home Fixtures

Thu 12th Oct (7:30)

Youths v Swindon

S`Marine

Sat 14th Oct (3:00)

Reserves v Letcombe

Thu 19th Oct (7:30)