



# Royal Wootton Bassett Town F.C.

The Bassett Ladies Bulletin - Season 2020-21



## Royal Wootton Bassett Town v Ilminster Town

South West Regional Women's Football League Premier Division

Sunday 13<sup>th</sup> September 2020

K.O. 2.00PM



Issue

L2

SWINDON • LONDON • GLASGOW



**cats**



Cats HQ Reception

COLOUR DIGITAL COLOUR DIGITAL COLOUR  
YING B&W COPYING B&W COPYING B&W C  
24x7 PRINT **24x7 PRINT** 24x7 PRINT 24x7 PRINT 2  
EB ORDERING ONLINE WEB ORDERING ONLI  
OLUTIONS **DIGITAL SOLUTIONS** DIGITAL SOLUT  
ICE 24x7 SERVICE 24x7 SERVICE 24x7 SERVICE  
RS **WE SELL XEROX COPIERS & PRINTERS** WE S

Cats Solutions Ltd Two Rushy Platt, Swindon, SN5 8WQ

**01793 432913**

[www.cats-solutions.com](http://www.cats-solutions.com)

**Programme Printing & Sponsor**

## Club Directory

Royal Wootton Bassett Town FC

Gerard Buxton Sports Ground, Brinkworth Road,  
Royal Wootton Bassett Town, Wiltshire SN4 8DS  
Tel: 01793 853880

Official Website: [www.rwbtfc.co.uk](http://www.rwbtfc.co.uk)

Facebook: [www.facebook.com/rwbtfc](http://www.facebook.com/rwbtfc)

Twitter: @RWBTFC

Chairman: **Andy Walduck** (07980 730905) [andy.walduck@wbtfc.co.uk](mailto:andy.walduck@wbtfc.co.uk)

Vice Chairman: **Peter Yeardeley**

Club Secretary: **Ian Thomas** (07714 718122) [ian.thomas@wbtfc.co.uk](mailto:ian.thomas@wbtfc.co.uk)

Treasurer: **Mike Price**

Commercial Manager: **Jeremy Smith**

Head of Senior Section: **Paul Davis**

Head of Ladies Section: **Jonny House**

Head of Youth Section: **Mari Green**

Head of Veterans Section: **Nick Warren**

Head of Senior Coaching: **Mick Byrne**

First Team Manager: **Sam Collier**

Club Sports Therapist: **Kara Gregory**

Dev Team Manager: **Stephen Yeardeley**

Ladies Team Managers: **Jonny House & James Goddard**

President & Programme Editor: **Mark Smedley**

Seniors Match Secretary: **Paul Curtis**

Press and Media Officer: **Stuart Smedley**

Website Editor and Designer: **Scott Smedley**

Welfare Officer: **Claire Cranswick-Coates**

## Life Members

Mick Woolford (1995), Rod Carter (2008), Roger Williamson (2008), Paul Harrison (2012), Pete Yeardeley (2012), Ron Stone (2013), Dave Topping (2016), Mark Smedley (2016), Bryan Wood (2017), Scott Smedley (2018), Stuart Smedley (2018), Gordon Reeves (2019), Paul Burke (2020)

## Ladies Team Honours

Wiltshire County Cup Winners 2018-19

Wiltshire County Cup Runners-up 2013-14, 2017-18

South West Regional Women's League Div 1 East Champions 2018-19

South West Regional Women's League Div 1 East Runners-up 2017-18

Gloucestershire Women's League Div 1 Runners-up 2016-17

Gordon Perrott Cup Winners 2016-17



Printed by: Cat Solutions, Two Rushy Platt, Swindon, SN5 8WQ  
01793 432913

RWBTFC pictures courtesy of Steve Green



# CONTENTS

## 04 Welcome

## 06 The Gaffers

The view from James & Jonny

## 07 Captain's Corner

Laura Jefferies

## 08 The Away End

Today's visitors profiled

## 12 Our Pen Pics

## 13 Our All-Time Record

## 14 Fixtures & Results

## 16 Appearances & Goals

## 17 Player Kit Sponsors

## 18 Step Back in Time

Looking back 1 year, 5 & 10 years

## 19 Half Time Quiz

## 20 Brentford Report

## 22 Women's FA Cup

## 23 SWRWFL Round-up

## 24 RWBFC Men's Teams

Fixtures & results for 1st & Dev

## 27 Women's Pyramid

## 28 Team Check

# Welcome to Today's Game

## **Welcome to Ilminster Town**

Welcome to the Gerard Buxton Sports Ground for the first South West Regional Women's League Premier Division fixture against Ilminster Town, who visit the Gerard Buxton Ground for the very first time. A special warm welcome to the players, officials and spectators from Ilminster who have made the long journey to the Gerard Buxton Sports Ground today from Somerset. We hope you enjoy your short stay with us this afternoon and we wish you a safe journey home.

Last season the scheduled visit from Ilminster was postponed and the one meeting between the two sides saw Ilminster triumph 3-1. The match report from that game is included in today's programme. The only other meeting between the two sides was back in the 2014-15 season in the FA Cup when Ilminster again beat us, 4-2 on that occasion, Emily Bogg and Laura Gammon with our goals that day. Ilminster come into today's game on the back of an impressive 10-0 win in the FA Cup. They were probably the best team in the league last season and have strengthened over the summer with two signings from higher league clubs. First Jodi Cornwall has joined from Southern Premier Division side Yeovil whilst Sian Chapman comes across from National Women's League West side Exeter City. Both were on the score sheet in last week's big win, Cornwall firing a hat-trick and Chapman scoring twice. Ilminster will certainly be tough opponents here this afternoon and by a quirk of the fixtures will be our next

opponents when we travel to Ilminster in a fortnight's time.

## **Keynsham Town Development**

Keynsham Town Development have pulled out of the league leaving the division with just 9 teams this season. Whilst it probably means there is a better chance of getting the season finished with less teams, it is always a great shame when teams are forced to withdraw from leagues. Hopefully, Keynsham will re-group and their Development side will be back in the South West Regional Women's League in the near future.

## **Brentford**

It was heart breaking for the Ladies to lose on penalties last week, penalties are such a cruel way to decide matters. It was certainly an entertaining game against what were a good Brentford side. First half they caused us lots of problems down our left-hand side but second half we were definitely the better side, the fresh legs in midfield allowing us to take the game to Brentford. Whilst I know Jonny and James were disappointed to go out so early on in the competition there was no shame in going out to a strong side from London who had some very good players. Hopefully the Ladies can pick themselves up from last week's defeat and put in a good performance here today and get a result against a side who are many peoples tip for the league title this season.

Enjoy the game.

# Covid-19 Spectator Advice



*Welcome to The Gerard Buxton Ground, home of RWBTFC*

## **SPECTATOR ADVICE**

- ◆ We ask you to maintain social distancing with anyone outside of your household and gather in groups of **no more than 6** at all times.
- ◆ Please utilise the hand sanitiser on entry to the ground, kiosk and toilet areas.
- ◆ Please refrain from touching the match ball – club volunteers will be responsible for returning balls to the pitch or technical area.
- ◆ Contactless payments are preferable at the kiosk.
- ◆ If you visit the bar, please respect the Covid-19 procedures in place. Track & Trace information will need to be given again.
- ◆ If you leave the stadium area, please show the document provided on entry setting out the spectator requirements on your return to avoid having to compete Track & Trace information again.

Thank you for visiting, we look forward to seeing you again soon.

# From The Gaffers

Afternoon all and welcome back to the Gerard Buxton Sports Ground!

Last weekend didn't go as we had planned and to exit the FA cup at the first hurdle is disappointing. I do however think the fact that we are disappointed shows just how far this club has come in the last few years. Brentford although being a level lower than us were a very even match for us. It was always obvious to us that the levels mean nothing when they are competing in a much tougher part of the country than we are. The depth of teams in London is completely different to the south west and in particular our catchment area.

We have watched the game back and the first half was a poor performance from us going forward but defensively we looked as solid as ever. Brentford scored the one chance they had and led at the break. Second half we were a different side and had more than enough chances to win the game. Unfortunately due to the FA making some odd changes this season, extra time wasn't played which I think would have led to us winning the game comfortably. Penalties is always a lottery and despite a brilliant save from Abi, Brentford came out on top. I wish them all the best against Ashford in the next round.



On another note a few players have also moved out on dual registration for the start of this season in order to get some match sharpness and experience. Libby Davies has gone to Melksham, Alice Farnell to Cirencester and Ellie Hayward has signed for Highworth. They are all a big part of Bassett's future and hopefully this experience will allow them to come back in and compete for a place in the squad later this season.

Today we welcome Ilminster who we make as favourites to win the division this year. They have recruited exceptionally well to add to a strong squad from last season. We have had them watched and hopefully we will have ways to counter the dangers they present. We are fortunate today to be back to near full strength after not being able to start a few last week due to injuries.

We wish to extend a warm welcome to the staff, players and supporters from Ilminster.

Please enjoy the game and support the ladies as much as possible!

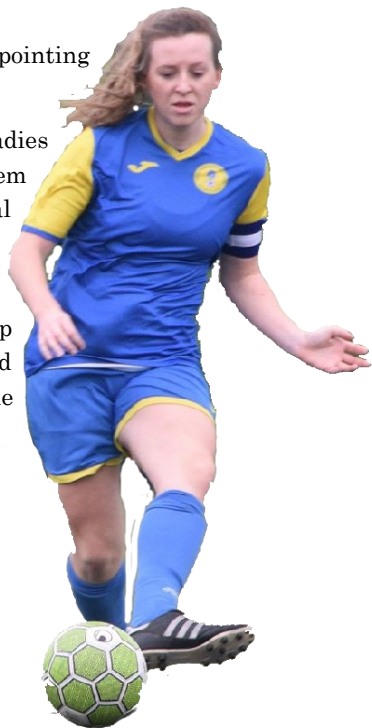
*James & Jonny*

# Captain's Corner

Today we turn our focus to the league, following a disappointing exit from the FA cup on penalties last weekend.

We are expecting a tough fixture from Ilminster Town ladies who were the 3-1 winners in our only fixture against them last season. A well organised team and one that's physical in a tackle, we need to be performing at our best to get a result.

Working in training on our weaknesses from the FA cup match, hopefully today we can put the cup result behind us and push on to where we found ourselves in the league last season. A warm welcome to Ilminster Town ladies and we hope you enjoy the game!



*Jeffers*

**The perfect blend between your local pub and favourite restaurant**

The Royal Wootton Bassett  
Old Malmesbury Road  
Royal Wootton Bassett  
Wiltshire, SN4 7HT  
01793 376190  
info@theroyalrwb.com



# Previous Meetings

**Sunday 5 January 2020**

**Ilminster Town 3 Royal Wootton Bassett Town 1**

## **Bad day at the office spells defeat**

Royal Wootton Bassett Town Ladies began the New Year with an afternoon they'd soon forget as the South West Regional Women's Football League Premier Division leaders were beaten 3-1 away at Ilminster Town. The effects of a lengthy lay off over Christmas showing, Bassett were not at the races against an Ilminster side whose victory pulls them within a point of their visitors.

Ilminster enjoyed the advantage of going ahead as early as the eight minute. Jess Dent was dispossessed before Maisie Parker delivered a cross, which Georgia Mann poked in at the far post after Amber Egerton was unable to clear. Bassett should have been on terms five minutes later when Maddie Elliott was brought down in the box. However Hayley Huckin's penalty was saved by Charlotte Johnson. Things could have become worse for Bassett but they somehow managed to survive a number of let offs as Ilminster piled on the pressure. Yet they managed to grab an equaliser before the break as Laura Jefferies' stoppage time free kick struck the bar and Elliott was first to react to the rebound.

But just as they finished the opening period on a high, Bassett got off on the wrong foot in the second half with Elliott being sent to the sin bin. And Ilminster soon took advantage of their extra player, Parker curling a free kick into the top corner after she was brought down by Grace Eagles. Moments later the hosts were awarded a penalty for a harsh handball against Hannah Gulliver but Abbie Carslake failed to convert, firing over the bar. A third eventually arrived though. Colette Martin forced a good save from Alice Farnell. But the Bassett 'keeper could not prevent substitute Harriet Kelly from guiding home the rebound.





# Opponents - Recent Record

## Iminster Town Ladies Historical Record - Recent Completed Seasons

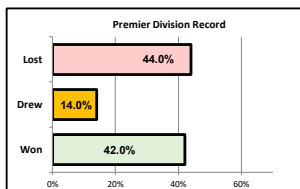
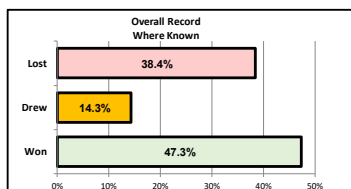
Season	League & Division	Pld	Won	Drew	Lost	For	Agst	Pts	Position	Top Scorer (including cups)
2013/14	Somerset County Women's Div 1	18	15	3	0	126	11	48	1 out of 7	<i>Not known</i>
2014/15	S.W. Regional Women's Eastern Div 1	14	7	2	5	24	22	23	4 out of 8	L. Spearing 5
2015/16	S.W. Regional Women's Eastern Div 1	16	3	1	12	15	53	10	8 out of 9	S. Crouch 10
2016/17	S.W. Regional Women's Eastern Div 1	14	7	3	4	23	19	24	3 out of 8	S. Crouch 13
2017/18	S.West Regional Women's Premier Div	22	8	2	12	33	47	26	7 out of 12	S. Crouch 9
2018/19	S.West Regional Women's Premier Div	20	8	3	9	37	38	27	8 out of 11	M. Parker 10
2019/20	S.West Regional Women's Premier Div	8	5	2	1	20	7	17	5* out of 10	C. Pettinger 6
<b>Totals</b>		<b>112</b>	<b>53</b>	<b>16</b>	<b>43</b>	<b>278</b>	<b>197</b>			

Won:Drew:Lost Ratio

47.3% 14.3% 38.4%

\* Position as at time of suspension of season due to Covid-19

Somerset County Women's Div 1	18	15	3	0	126	11	Won:Drew:Lost Ratio	83.3%	16.7%	0.0%
S.W. Regional Women's Eastern Div 1	44	17	6	21	62	94	Won:Drew:Lost Ratio	38.6%	13.6%	47.7%
S.West Regional Women's Premier Div	50	21	7	22	90	92	Won:Drew:Lost Ratio	42.0%	14.0%	44.0%



### Last Season - 2019-20

#### South West Regional Women's Football League - Premier Division

	P	W	D	L	F	A	Pts
1 Bishops Lydeard Ladies	12	7	2	3	38	22	23
2 Royal W.Basset Town	9	7	0	2	32	14	21
3 Callington Town Ladies	9	6	0	3	31	11	18
4 Portishead Ladies	7	5	2	0	29	4	17
<b>5 Iminster Town Ladies</b>	<b>8</b>	<b>5</b>	<b>2</b>	<b>1</b>	<b>20</b>	<b>7</b>	<b>17</b>
6 Bideford Ladies AFC	15	4	4	7	27	25	16
7 Middlezey Ladies	12	4	1	7	15	23	13
8 Keynsham Town Dev #	11	4	3	4	15	20	12
9 Marine Acad. Plymouth	9	2	3	4	14	18	9
10 Torquay United Ladies	14	0	1	13	5	82	-2

#### Results 2019-20

Home	Away
W 3 - 1	D 2 - 2
W 3 - 1	DNP
W 4 - 0	DNP
DNP	D 1 - 1
DNP	W 1 - 0
DNP	L 1 - 2
DNP	DNP
DNP	DNP
DNP	W 5 - 0



# Opponents History

Ilminster Town Football Club, like most clubs, started life just as a men's side and it has been possible to find traces of a side playing in the late 1890's in the British Newspaper archive but the precise date of formation is not known. At sometime at the start of the 20th century they were known as Ilminster United but changed their name to Ilminster Town in 1920 whilst members of the Perry Street & District League. During the 1930's they won the Somerset Junior Cup on three occasions. Just after the Second World War Ilminster commenced entering the FA Cup and did so throughout the 1950's with the best performance being making the Second Qualifying Rounds on a number of occasions.

The club joined the Western Football League in the newly reformed Division One for the 1976-77 season. The following season, Ilminster were promoted to the Premier Division after finishing third. They lasted two seasons in the top flight of the Western League, during which time they reached the Third Round of the FA Vase, before being relegated back to Division One. Two seasons later, the club left the Western League altogether.

Ilminster Town joined the Somerset Senior League Division One in 1985-86, but were relegated to Division Two in 1988. The next season the club were crowned champions and regained their Division One status. They remained in the league until being relegated in 1995. Again they bounced back the following season by winning Division Two. In 1999, the club was again relegated, and only returned to Division one after finishing runners-up in 2002-03. The following season, Ilminster were crowned champions of Division One and reached the Premier Division for the first time. In 2008, the club was relegated back to Division One, but returned to the Premier Division in 2012 after again

winning the league title. This time round they stayed in the Premier Division for three seasons but all three seasons saw them near the bottom and they were relegated to what had become a regionalised Division One, playing in the West Division. They were back down for just two seasons, however, returning to the Premier Division after winning the 2016-17 Division One West title. They have held their own since returning to the Premiership generally finishing safely in mid table.

In terms of the Ladies team at the club, the earliest record we have been able to trace is membership of the Somerset County League Division One in Season 2013-14 which Ilminster won to earn promotion to the South West Regional Women's League where they have remained ever since. After three seasons in Eastern Division One they earned promotion to the Premier Division after finishing in third place. Their first two seasons in the top flight of the league saw them finish in seventh and eighth place respectively.

Last season Ilminster Town sat in 5th place in the table with just one defeat from eight fixtures and with games in hand at the time the season was brought to a premature end. They were very much looking like they were a major contender in the title race. They had also reached the semi-final of the Pat Sowden Cup in what was shaping up to be their most successful season ever. They opened their season with a 4-0 away win over AEK Boco in the FA Cup. But they finally exited the FA Cup at the hands of Portsmouth based side Moneyfields. Their one and only defeat in the league came away at Middlezoy where they lost 2-1.

# Opponents Pen Pics



**Charlotte Johnson - Goalie**  
Regular No.1 for Ilminster who this season will make it 50 appearances in the Premier Division for the club.

**2019-20 Appearances: 11**



**Leslie Spearing - Midfield**  
Long serving player who scored in Ilminster's 5-0 away win at Torquay United last season.

**2019-20 Appearances: 4, 1 goal**



**Dana Andrews - Defence**  
Regular in the impressive Ilminster defence last season that conceded less than a goal per game in the league. Part of the 2016-17 side that won promotion to the Premier Division.

**2019-20 Appearances: 11**



**Georgia Mann - Defence**  
Defender whose only goal of last season came early on in Ilminster's 3-1 win over Bassett.

**2019-20 Appearances: 8, 1 goal**



**Daisy Charles - Defence**  
Another regular in the mean Ilminster defence last season and part of the side that beat Bassett 3-1 last season. Part of the 2016-17 promotion winning side.

**2019-20 Appearances: 10**



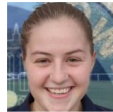
**Georgia Coward - Defence**  
Another regular in last season's Ilminster defence who made her debut in the Premier Division in Season 2018-19.

**2019-20 Appearances: 8**



**Colette Martin - Midfield**  
A player with over 40 appearances in the Premier Division whose best season was in 2018-20 when Colette scored 7 in 19 appearances.

**2019-20 Appearances: 9, 3 goals**



**Charlotte Pettinger - Midfield**  
Midfield player who certainly knows where the goal is scoring 6 times last season.

**2019-20 Appearances: 11, 6 goals**



**Hannah Billing - Midfield**  
A regular in Ilminster's midfield who starts the season having made close to 40 appearances in the Premier Division.

**2019-20 Appearances: 11**



**Harriet Kelly - Forward**  
Striker who made 2 appearances last season, one of which was against Bassett and Harriet scored in this game. Scored 2 in last week's big FA Cup win.

**2019-20 Appearances: 2, 1 goal**



**Maisie Parker - Midfield**  
Regular in the Ilminster midfield, the attacking midfielder scored twice last season including one in the 3-1 win of Bassett. Top scorer in 2018-19.

**2019-20 Appearances: 11, 2 goals**



**Abigail Carslake - Forward**  
Ilminster No. 9 who scored 4 times last season including bagging a brace against Torquay Utd in a 5-0 away win and also 2 in last week's big FA Cup win.

**2019-20 Appearances: 11, 4 goals**



**Sarah Miller - Midfield**  
Captain of the Ilminster side and regular last season who will once again be skipping the side. Two goals from midfield last season.

**2019-20 Appearances: 11, 2 goals**



**Graziely Esperanca - Midfield**  
Attacking midfielder player who contributed 3 goals from midfield last season who was part of the 2016-17 squad that won promotion to the Premier Div.

**2019-20 Appearances: 9, 3 goals**



**Charlotte Pettinger - Midfield**  
Midfield player who certainly knows where the goal is scoring 6 times last season as Ilminster lost just once in 8 league games.

**2019-20 Appearances: 11, 6 goals**



**Lauren Struszczak - Defender**  
Made just the one appearance last season and will be hoping to hold down a regular spot this coming season.

**2019-20 Appearances: 1**



**Jodi Cornwall - Forward**  
Summer signing from Southern Premier Division side Yeovil who scored a hat-trick in last week's FA Cup win.

**2019-20 Appearances: N/A**



**Sian Chapman - Forward**  
Summer signing from National Women's League West side Exeter City who scored two in last week's FA Cup win.

**2019-20 Appearances: N/A**

2019-20 appearance and goals data based on FA Full-Time

# RWBTFC Ladies Pen Pics



## Abi Footner - Goalkeeper

Regular goalkeeper at the club in recent seasons now starting her 3<sup>rd</sup> season. Abi brings a wealth of experience and is a presence both on and off the pitch

**2019-20 Appearances: 9**



## Alice Farnell - Goalkeeper

Young keeper who will be entering her second season in the senior game. Previously played for the Wiltshire representative team and will be pushing Abi Footner hard for that No. 1 spot.

**2019-20 Appearances: 10**



## Laura Jefferies - Defence

A Bassett stalwart, Laura captained the Royal Wootton Bassett Ladies team for the past few seasons and won both the Manager's and Players' Player of the Year in Season 2018-19.

**2019-20 Appearances: 16, 3 goals**



## Rosie Kirk - Defence

Youngster who will be entering her 2nd season in the senior game. Reads the game exceptionally well for someone of her age and has a calmness which is rare in a player so young.

**2019-20 Appearances: 12**



## Mollie Smith - Defence

Starting her 3<sup>rd</sup> season, can play across the back line at both centre back and full back and is more than comfortable in one-on-one situations and possesses composure when on the ball.

**2019-20 Appearances: 13**



## Lara Wilson - Defence

Youngster who had an impressive first season at senior level with the club. Competitive player who was voted joint Players Player of the Year for Season 2019-20.

**2019-20 Appearances: 12**



## Lois Beer- Midfield

Attacking midfield player who played for the club's youth section and returns to the club having been part of Supermarine's Wiltshire Women's League double winners in 2018-19.

**2019-20 Appearances: N/A**



## Lisa Coe - Midfield

Long-serving midfield player, who was vital to the team winning the double in Season 2018-19. An elegant, technically gifted midfielder who can dictate the game when needed.

**2019-20 Appearances: 16, 3 goals**



## Amber Egerton - Midfield

One of Bassett's longest-serving players and a previous winner of the Manager's and Players' Player of the Year awards, the latter which she lifted again last season as joint winner.

**2019-20 Appearances: 16, 2 goals**



## Hannah Gulliver - Midfield

Winner of Bassett's Manager's Player of the Year award in 2017-18 as well as Supporters' Player of the Year in Season 2018-19, Hannah is an all-round athlete who has the ability to defend and attack.

**2019-20 Appearances: 14, 9 goals**



## Beth Kelloway - Midfield

Joined the club last season from Frampton Rangers. A cultured, technically gifted midfielder who is calm in possession and can dictate the game from midfield.

**2019-20 Appearances: 16, 1 goal**



## Grace Eagles - Midfield

Now in her 2<sup>nd</sup> season with the club an athletic, strong midfielder player who has the ability to play various roles. A former Wiltshire County representative player who did very well last season.

**2019-20 Appearances: 13, 6 goals**



## Emma Sykes - Midfield

Cultured midfielder player with great awareness who was a regular in our double winning season. A bad injury and then university meant Emma did not play for the club last season.

**2019-20 Appearances: N/A**



## Holly Baker - Forward

A quick forward player who possesses a great ability to hold up the ball and combine with her teammates. NOT afraid of getting stuck in and can always be relied upon to give her best.

**2019-20 Appearances: 11, 4 goals**



## Shannon King - Winger

Another new signing who was part of Supermarine's Wiltshire Women's League double winners in 18-19 and scored 5 times in their first season in SWRWL Eastern Division in 19-20.

**2019-20 Appearances: N/A**



## Lani Dickinson - Forward

A key summer signing, Lani has established herself as a potent threat in the SWRWFL Eastern Div in recent years, scoring 12 for Swindon Spitfires in 18-19 and 14 for Supermarine last year.

**2019-20 Appearances: N/A**



## Hayley Huckin - Forward

Bassett's leading striker who has scored 59 goals in 51 appearances in the past 3 seasons winning the Managers Player of the Year Award last season.

**2019-20 Appearances: 16, 22 goals**



## Maddy Elliott - Forward

A regular in the starting line-up for several seasons now and player with a real engine. Madeline had a good goal scoring season in 2019-20 with 7 goals from 14 appearances.

**2019-20 Appearances: 14, 7 goals**



## Aly Lyons - Forward

All but two of Aly's appearances last season were as a substitute but Aly scored 2 in one of those starting appearances against Melksham Town in the County Cup.

**2019-20 Appearances: 10, 4 goals**



## Eloise Hayward - Forward

Youngster who was in the squad at the start of last season but then suffered an injury that brought her season to an end. Hopefully will have an injury free season this time round.

**2019-20 Appearances: 3, 2 goals**

# RWB Town Ladies All-time Record

## Royal Wootton Bassett Town Ladies Historical Record - Previous Seasons Plus Current

Season	League & Division	Pld	Won	Drew	Lost	For	Agst	Pts	Position	Top Scorer
2003-04	Wiltshire League	17	10	1	6	65	39	31	3 out of 6	C. Reid 14
2004-05	Wiltshire League	19	11	3	5	61	30	36	3 out of 6	K. Hulse 8
2005-06	Wiltshire League	12	3	0	9	18	36	9	4 out of 5	S. Walsh 10
2006-07	No team this season									
2007-08	No team this season									
2008-09	No team this season									
2009-10	Gloucestershire County League Div 3	15	11	1	3	68	31	34	2 out of 6	A. Longo / J. McFadzean 19
2010-11	Gloucestershire County League Div 3	12	7	3	2	54	20	24	2 out of 7	Y. Spratt 10
2011-12	Gloucestershire County League Div 2	16	12	1	3	88	21	37	2 out of 9	A. Polden 24
2012-13	Gloucestershire County League Div 1	16	9	1	6	45	28	28	4 out of 9	A. Polden 21
2013-14	Gloucestershire County League Div 1	18	4	6	8	31	36	18	8 out of 10	E. Bogg 12
2014-15	Gloucestershire County League Div 1	20	9	6	5	41	27	33	5 out of 11	E. Bogg 16
2015-16	Gloucestershire County League Div 1	20	9	3	8	42	38	30	5 out of 11	L. Gammon 11
2016-17	Gloucestershire County League Div 1	18	13	4	1	51	16	43	2 out of 10	L. Gammon 25
2017-18	S.West Regional Women's Div 1 East	22	17	3	2	63	23	54	2 out of 12	H. Huckin 22
2018-19	S.West Regional Women's Div 1 East	20	17	2	1	66	10	53	1 out of 11	E. Arrell 27
2019-20	S.West Regional Women's Premier Div	9	7	0	2	32	14	21	2* out of 10	H. Huckin 17
2020-21	S.West Regional Women's Premier Div								out of 10	
<b>Totals</b>		<b>234</b>	<b>139</b>	<b>34</b>	<b>61</b>	<b>725</b>	<b>369</b>			
<b>Won:Drew:Lost Ratio</b>		<b>59.4%</b>		<b>14.5%</b>		<b>26.1%</b>				

Wiltshire League	48	24	4	20	144	105	Won:Drew:Lost Ratio	50.0%	8.3%	41.7%
Gloucestershire County League Div 3	27	18	4	5	122	51	Won:Drew:Lost Ratio	66.7%	14.8%	18.5%
Gloucestershire County League Div 2	16	12	1	3	88	21	Won:Drew:Lost Ratio	75.0%	6.3%	18.8%
Gloucestershire County League Div 1	92	44	20	28	210	145	Won:Drew:Lost Ratio	47.8%	21.7%	30.4%
S.W. Regional Women's Eastern Div 1	42	34	5	3	129	33	Won:Drew:Lost Ratio	81.0%	11.9%	7.1%
S.West Regional Women's Premier Div	9	7	0	2	32	14	Won:Drew:Lost Ratio	77.8%	0.0%	22.2%
<b>Totals</b>		<b>234</b>	<b>139</b>	<b>34</b>	<b>61</b>	<b>725</b>	<b>369</b>			





# Royal Wootton Bassett Town FC Ladies Season 2020-21



## Season 2020-21 Fixtures and Results

Date	Opponents	H/A	Result	1	2	3	4	5	6	7	8	9	10	11	12	14	15	16	17
06-Sep	Brentford (FAC EP)	H	L 1 - 1*	Footner	Kirk	Eagles	M. Smith	Jefferies	Egerton	Gulliver	Sykes	Huckin (1)	Baker	Kelloway	Beer	Dickinson	Coe	Elliott	
13-Sep	Ilminster Town Ladies	H																	
27-Sep	Ilminster Town Ladies	A																	
04-Oct	Portishead Ladies	A																	
18-Oct	Bideford Ladies	H																	
01-Nov	Portishead Ladies	H																	
08-Nov	Callington Town Ladies	A																	
15-Nov	Torquay United Ladies	H																	
22-Nov	Bishops Lydeard Ladies	A																	
	Bideford Ladies	A																	
	Bishops Lydeard Ladies	H																	
	Callington Town Ladies	H																	
	Marine Academy Plymouth	A																	
	Marine Academy Plymouth	H																	
	Middlezoy Ladies	A																	
	Middlezoy Ladies	H																	
	Torquay United Ladies	A																	
	Wilts County Cup 1																		

FAC - Women's FA Cup, WCC - County Cup, PS Cup - Pat Sowden Cup (League Cup), \* Lost 6-7 on pens

Player of the Match

## South West Women's Football League

### Premier Division Season 2019-20 - As at time season was ended

	Pld	W	D	L	F	A	Pts
1 Bishops Lydeard Ladies	12	7	2	3	38	22	23
2 <b>Royal W. Bassett Town Ladies</b>	9	7	0	2	32	14	21
3 Callington Town Ladies	9	6	0	3	31	11	18
4 Portishead Ladies	7	5	2	0	29	4	17
5 Ilminster Town Ladies	8	5	2	1	20	7	17
6 Bideford Ladies AFC	15	4	4	7	27	25	16
7 Middlezoy Ladies	12	4	1	7	15	23	13
8 Keynsham Town Dev #	11	4	3	4	15	20	12
9 Marine Academy Plymouth Ladies	9	2	3	4	14	18	9
10 Torquay United Women #	14	0	1	13	5	82	-2

# Points deducted for non fulfilment of fixtures

### Royal Wootton Bassett Town Ladies Appearances & Goals - Season 2019-20

	Appearances			Goals				
	Starts	As Sub	Total	League	FAC	PSC	WCC	Total
Beth Kelloway	16		16				1	1
Laura Jefferies	16		16	3				3
Amber Egerton	15	1	16	2				2
Hayley Huckin	15	1	16	14	4		4	22
Lisa Coe	15	1	16	1	1	1		3
Hannah Gulliver	14		14	1	4	1	3	9
Madeline Elliott	10	4	14	3	4			7
Mollie Smith	8	5	13					
Grace Eagles	7	6	13	3	1		2	6
Lara Wilson	9	3	12					
Rosie Kirk	8	4	12					
Lily Withers	7	5	12				1	1
Lauren Kayll	10	1	11	7				7
Alice Farnell	9	1	10					
Aly Lyons	2	8	10	2			2	4
Abi Footner	7	2	9					
Sophie Smith	1	7	8				3	3
Jessica Dent	7		7					
Lauren Usher		5	5					
Eloise Hayward		3	3		1		1	2
Libby Davies		3	3			1		
Holly Baker		2	2					
Own Goals				1				1
				37	15	3	17	71

# RWBT FC Ladies Appearances & Goals

## Current Season 2020-21 Appearances

		Starts	As Sub	Total	Goals
1	Holly Baker	1		1	
2	Grace Eagles	1		1	
3	Amber Egerton	1		1	
4	Abi Footner	1		1	
5	Hannah Gulliver	1		1	
6	Hayley Huckin	1		1	1
7	Laura Jefferies	1		1	
8	Beth Kelloway	1		1	
9	Rosie Kirk	1		1	
10	Mollie Smith	1		1	
11	Emma Sykes	1		1	
12	Lois Beer		1	1	
13	Lisa Coe		1	1	
14	Lani Dickinson		1	1	
15	Maddy Elliott		1	1	
16	Alice Farnell				
17	Eloise Hayward				
18	Shannon King				
19	Aly Lyons				
20	Lara Wilson				

## Total in SWRWFL\*

	Apps	Goals
	31	5
	14	6
	53	6
	29	
	52	11
	52	60
	57	8
	17	1
	13	
	17	
	39	3
	1	
	47	12
	1	
	42	7
	10	
	3	2
	23	10
	12	

\* Total appearances and goals only relate to games played when in the South West Regional Women's Football League & includes all cup competitions (i.e from 2017-18). Information for seasons before 2017-18 in the Gloucestershire County League and Wiltshire County League has not been collected/maintained on FA Full-Time by the respective leagues.

Statistics include Season 2019-20 which happened even if the FA have stated otherwise!



Emma Sykes, Beth Kelloway and Laura Jefferies

# RWBTFC Kit Sponsors



**Abi Footner**  
Sponsor:  
Mr Sparkles, Melksham



**Alice Farnell**  
Sponsor:  
EMS Physio



**Lara Wilson**  
Sponsor:  
Mail Boxes etc  
Maida Vale



**Hannah Gulliver**  
Sponsor:  
Steve Green



**Laura Jefferies**  
Sponsor:  
Arctic Services



**Mollie Smith**  
Sponsor:  
Zebra Solutions



**Rosie Kirk**  
Sponsor:  
M&R Painting  
& Decorating



**Amber Egerton**  
Sponsor:  
John Wilkins



**Beth Kelloway**  
Sponsor:  
Future of  
Football



**Emma Sykes**  
Sponsor:  
Sitetype: Swindon  
Web Designers



**Lois Beer**  
Sponsor:  
BLB Kilminster  
Beer LLP



**Lisa Coe**  
Sponsor:  
Richard Paish



**Hayley Huckin**  
Sponsor:  
The Moore Family



**Maddy Elliott**  
Sponsor:  
Arctic Services



**Lani Dickinson**  
Sponsor:  
Roberts & Prowse



**Shannon King**  
Sponsor:  
P&L Bookkeeping



**Holly Baker**  
Sponsor:  
Keith & Sally  
House



**Grace Eagles**  
Sponsor:  
Paul Eagles



**James Goddard**  
Sponsor:  
The Royal  
Wootton Bassett  
Restaurant



**Jonny House**  
Sponsor:  
The Royal  
Wootton Bassett  
Restaurant



**Eloise Hayward**  
Sponsor:

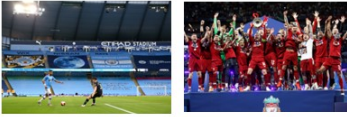


**Aly Lyons**  
Sponsor:

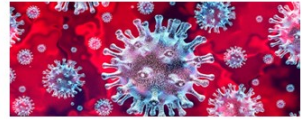


# Step Back in Time

Looking back in time to see what was happening for RWBTFC in the Ladies Section 1 Year Ago, 5 years ago and 10 years ago.



2019-20



The corresponding weekend last season saw us in action in the Wiltshire County Cup in the first game of our defence of the cup we had won the previous season. Two goals from Hayley Huckin plus one for Hannah Gulliver and Eloise Hayward secured a 4-0 win for Bassett over Laverstock & Ford and progress to Round 2 where Melksham Town would be our next opponents.



2015-16



The 13th of September was not a good Sunday for the Ladies back in Season 2015-16 as we suffered a heavy defeat at home against Bristol Ladies Union who would finish bottom of the table after having six points deducted for playing ineligible players, which possibly included this game. We went down 8-1 at home in the Gloucestershire County League, Laura Jefferies with our consolation goal. Bristol Ladies Union would win just one other game in the league and when the sides met again later in the season Bassett avenged this heavy defeat with a 2-0 away win.



2010-11



Ten years ago, Bassett picked up a big win in the Gloucestershire County Women's Football League with a 7-1 home success over AEK Boco Reserves. Both Jenna McFadzean and Yazz Spratt bagged a brace and current captain Laura Jefferies also got on the score sheet along with K Oakes and April Polden.



# Half Time Quiz

## Names The Same

Name the 10 current members of the Ladies Team Squad from the general knowledge questions or clues below. In every instance the answer is the SURNAME of a current registered player. All I need is the full name of a player from the surname indicated by the clue.

1. Former Swindon school named after writer that was located on what is now the New College site.
2. Current President of the IAAF.
3. Author Jonathan Swift wrote about her travels.
4. Writer and director of 1979 TV comedy programme The Plank.
5. Former Head Boy of Wootton Bassett Comp, now Senior Partner & Chairman of Knight Frank.
6. Welsh actor who starred as both Eddie The Eagle and Elton John..
7. Rub-a dub-dub, three men in a tub - not the Butcher.
8. Along with their nephew they make medical products and devices.
9. Captain who might ask Scottie to beam him up.
10. WW2 film where Clint Eastwood & Richard Burton lead elite commandos to rescue a general.

## Famous Fans

Which football teams to the following famous people from the music industry support:

1. Rod Stewart
2. Elvis Costello
3. Robert Smith (from The Cure)
4. Serge Pizzorro (Kasabian)
5. Ricky Wilson (Kaiser Chiefs)
6. Paul Heaton from Beautiful South
7. Alex Turner (Arctic Monkeys)
8. Suggs (Madness)
9. Terry Hall (Specials)
10. Sting (The Police)

## Answers on Page 25



# Match Report v Brentford

**Royal Wootton Bassett Town 1  
Brentford WFC 1 (Brentford win 7-6  
on penalties)**



Royal Wootton Bassett Town Ladies suffered a stinging 7-6 defeat on penalties in their SSE Women's FA Cup Extra Preliminary round tie against Brentford after the game finished 1-1 after the end of normal time. In an end-to-end clash which saw numerous opportunities for both teams, it was little surprise that there was nothing to separate the sides at full time.



Penalties then appeared set to drag on as Bassett matched Brentford blow for blow. After both sides missed their opening spot kicks – Abi Footner pulling off a save to deny Brentford and Hayley Huckin placing over the bar – thirteen successful penalties followed, with Maddy Elliott, Grace Eagles, Beth Kelloway, Lois Beer, Laura Jefferies and Hannah Gulliver finding the net for Bassett. However, Bassett defender Mollie Smith then had the misfortune of firing over the bar to decide the game.

Penalties is always a cruel way to lose a game, and this was no different in an entertaining tie featuring two evenly matched teams.

Brentford had gone ahead midway through the first half when a long ball over the top caught the home defence, which Rebekah Wiltshire raced onto before producing a



cool finish past Footner.

Huckin had twice gone close for Bassett during the opening period and she eventually equalised shortly after the restart. Great play down the right by Gulliver freed up Holly Baker, who was brought down by the visiting 'keeper and Huckin kept her cool from twelve yards.

A great save from Footner ensured the scores remained level before Brentford had the ball in the net again only for referee Andrew Lincoln to controversially blow for a foul on the Bassett 'keeper. The hosts soon had a spell in which they were in the ascendancy as Lani Dickinson fired wide from a two-on-one opportunity.

A frantic finish then saw Eagles curl narrowly over and Huckin nearly score with a chip, while at the other end Brentford had two efforts that almost found a winner, Footner denying the second with a good save.

Penalties were therefore ultimately required – and it was the visitors who edged a tense shootout. (Pictures courtesy of Steve Green)

# Club Sponsors

## Royal Wootton Bassett Town F.C.

Would like to thank our various  
sponsors for this coming season.

### Senior Section

First Team Shirt Sponsor: **Mather & Murray**

Ladies Team: **Aftech & TWB Scrap**

Ladies & Dev Team Hospitality: **[www.snackandsandwich.co.uk](http://www.snackandsandwich.co.uk)**

First Team & Ladies Team Programmes: **Cats Solutions**

### Youth Section

**J Rouse & Son (U18), Catalent and J. Rouse & Sons (U16 Blue)**

**G & P Cases (U16 Yellow), Launch to Learning (U14 Blue),**

**Catalent (U12 Yellow), Catalent (U11),**

**Mason Price (U10 Blue), Wason & Webb (U9 Blue),**

**Moovahome (U9 Yellow) Chris Rust (U8)**

### Advertising Boards & Other

### Sponsorship

Aftech, TWB Scrap, C.S. building Services, Arctic Services,  
Advanced Sports Coaching Ltd, KG Sports Massage, Topping &  
Van Gerwen, Crump Butchers, Atwell Martin, Park Flooring, Don  
Rogers Sports, Sally Pussey's, SJ Curtis, Awdry Bailey Douglas,  
Barnes Coaches, SNES, J Gas Ltd

# Women's FA Cup

## RWBTFC Women's F.A. Cup Record

2012-13	QR1	Southampton Women	H	L 2 - 6
2013-14	Pre	Cheltenham Cival Service	H	W 1 - 0
	QR1	Bristol Ladies Union	A	L 0 - 11
2014-15	Pre	Ilminster Town	H	L 2 - 4
2015-16	QR1	Downend Flyers	H	L 1 - 5
2016-17	QR2	AEK Boco	A	L 1 - 3
2017-18	QR1	AFC Bournemouth	H	L 2 - 5
2018-19	QR1	Warsash Wasps	A	L 1 - 3
2019-20	Pre	Chipping Sodbury Town	H	W 7 - 0
	QR1	Torquay United	H	W 8 - 0
	QR2	Portishead Town	A	L 0 - 1
2020-21	EPr	Brentford WFC (6-7 on pens)	H	L 1 - 1



### THE ROAD TO WEMBLEY FOR ROYAL WOOTTON BASSETT TOWN F.C. 2020-21

Date	Round	Opponents	H/A	Result	Prize Money*	
					Winner	Loser
6-Sep-20	Extra Preliminary Round	v Brentford WFC	H		£300	£75
20-Sep-20	Preliminary Round	v Ashford Town	H		£360	£90
4-Oct-20	First Qualifying Round	v			£400	£100
18-Oct-20	Second Qualifying Round	v			£450	£115
1-Nov-20	Third Qualifying Round	v			£600	£150
15-Nov-20	First Round	v			£850	£215
29-Nov-20	Second Round	v			£1,000	£250
10-Jan-21	Third Round	v			£1,250	£315
31-Jan-21	Fourth Round	v			£2,000	£500
28-Feb-21	Fifth Round	v			£3,000	£750
21-Mar-21	Sixth Round	v			£4,000	£1,000
18-Apr-21	Semi-Final	v		Wembley	£5,000	£1,250
22-May-21	Final	v		Wembley	£25,000	£15,000
<b>Total Prize Money Won</b>						<b>£75</b>

\* Based on 2019-20 (To be confirmed)

### THE ROAD TO WEMBLEY FOR ROYAL WOOTTON BASSETT TOWN F.C. 2019-20

Date	Round	Opponents	H/A	Result	Prize Money	
					Winner	Loser
18-Aug-19	Extra Preliminary Round	v Bye			£300	£75
1-Sep-19	Preliminary Round	v Chipping Sodbury Town	H	W 7 - 0	£360	£90
22-Sep-19	First Qualifying Round	v Torquay United Ladies	H	W 8 - 0	£400	£100
6-Oct-19	Second Qualifying Round	v Portishead Ladies	A	L 0 - 1	£450	£115
27-Oct-19	Third Qualifying Round	v Moneyfields	H		£600	£150
10-Nov-19	First Round	v Southampton Women's FC	A		£850	£215
1-Dec-19	Second Round	v MK Dons	H		£1,000	£250
5-Jan-20	Third Round	v WBA	H		£1,250	£315
26-Jan-20	Fourth Round	v Crystal Palace	H		£2,000	£500
16-Feb-20	Fifth Round	v Brighton*	H		£3,000	£750
26-Sep-20	Sixth Round	v Birmingham City*	H		£4,000	£1,000
30-Sep-20	Semi-Final	v		Wembley	£5,000	£1,250
31-Oct-20	Final	v		Wembley	£25,000	£15,000
<b>Total Prize Money Won</b>						<b>£875</b>

# FA Cup Extra Preliminary Round

Ilminster Whilst we were losing on penalties in the FA Cup three other South West Regional Women's League Premier Division sides were in FA Cup action. Biggest winners of the day were Marine Academy Plymouth who smashed 21 past lower league cup debutants Ottery St Mary at Ivybridge in a one-sided extra preliminary round clash. MAP Ladies were 12-0 up at half-time and they did not let up after the break. Samantha Drewery ended the afternoon with six goals – five of which came in the first half. Izzie Scott was also dead in front of goal, finishing with five. Olivia Ramsey bagged two in the first half, while Isla Brumhead netted twice in the second. There were also goals for Emily Jeaton, Beth Everson, Chloe Harris, Amber Hadrill and Jade Bryan, while Ottery also scored an own goal.

Today's visitors Ilminster Town were also big winners hitting 10 unanswered goals away at Banwell. Leading the way were summer signings Jodi Cornwall and Sian Chapman. Cornwall, who joined from Southern Premier Division side Yeovil fired a hat-trick whilst Chapman who also played at a higher level for Exeter City last season in the National Women's League South West Division bagged a brace. Harriet Kelly and Abbie Carslake also got two and a goal from Colette Martin completed the scoring.

The other side in FA Cup action were Middlezoy and, like us, penalties were needed to settle their tie with Bristol Ladies Union after it finished 1-1 at the end of 90 minutes, Ellie Roberts with the Middlezoy goal. In the penalty shoot out it was Middlezoy who prevailed 4-2 meaning all other 8 sides in the Premier Division will be in the Preliminary Round, it is just ourselves who miss out this season.

## FA Cup Extra Preliminary Round Results

Bristol Ladies Union FC	1 - 1	Middlezoy Rovers LFC (2-4 pens)
Boro Rangers FC Ladies	0 - 1	Workington Reds LFC
Birtley Town LFC	0 - 3	Bishop Auckland LFC
Stanwix LFC	0 - 6	South Shields LFC
Wallsend Boys Club LFC	6 - 1	Hartlepool United LFC
Gateshead Leam Rangers WFC1	3 - 3	CLS Amazons Women FC
Appleby Frodingham LFC	4 - 3	South Cave Sporting Club Ladies FC
Harworth Colliery LFC	6 - 1	Silsden AFC Ladies
Wakefield Trinity FC Ladies	5 - 0	Hepworth United Ladies FC
Harrogate Town Ladies AFC	3 - 1	Farsley Celtic Ladies FC
Yorkshire Amateur AFC Ladies P	P - P	Altofts LFC
Rotherham United LFC	3 - 3	Oughtibridge War Memorial LFC (3-0 pens)
Crewe Alexandra LFC	1 - 0	West Didsbury & Chorlton LFC
Tranmere Rovers LFC	2 - 3	Fleetwood Town Wrens LFC
Cheadle Town Stingers WFC	5 - 1	Chester FC Women
Curzon Ashton LFC	7 - 2	Haslingden Girls & Ladies FC
Merseyrail LFC	5 - 0	Mossley AFC Women
Dialbury LFC	1 - 2	Northwich Vixens LFC
FC United of Manchester	13 - 0	West Kirby LFC
Mossley Hill LFC	P - P	Ashton United Women♦♦ FC
AFC Darwen Ladies	9 - 0	Nelson Ladies FC
Grimsbury Borough LFC	W - L	Pride Park Ladies FC
Notts County Ladies FC	4 - 4	Lincoln United LFC (2-3 pens)
AFC Leicester Ladies	0 - 5	Woodlands FC Ladies
Sherwood FC Ladies	W - L	HBW United LFC
Rise Park LFC	3 - 0	Asfordby Amateurs Ladies FC
Dronfield Town LFC	2 - 1	Arnold Eagles Women FC
Arnold Town LFC	L - W	Alloxton & New Parks LFC
Beaumont Park Ladies FC	6 - 2	Groyby Women FC
Coalville Town LFC	2 - 7	Oadby & Wigston LFC
Darlaston Town (1874) LFC	2 - 6	Shifnal Town LFC
Kingfisher LFC	0 - 3	Knowle LFC
Sutton Coldfield Town LFC	5 - 0	Coventrians LFC
Westfields LFC	2 - 1	Leamington Lions LFC
Shrewsbury Juniors LFC	0 - 5	Lye Town LFC
Coventry Sphinx LFC	3 - 0	Sandwell Ladies FC
Tamworth Ladies FC	8 - 0	Doveridge LFC
Solihull Sporting Ladies FC	1 - 4	Kidderminster Harriers LFC
Cookley Sports Ladies FC	2 - 1	Coundon Court LFC
Hereford Pegasus Ladies FC	1 - 0	Rugby Borough LFC
Walsall Wood Ladies FC	0 - 6	Redditch United Ladies FC
Tamworth Academy WFC	0 - 15	Worcester City LFC
Balls To Cancer Ladies FC	1 - 9	Stokingsford AA Pavilion LFC
Rugby Town LFC	2 - 6	Sedgley & Gornal United FC Women
St Ives Town LFC	12 - 0	Hartham United LFC
Newmarket Town LFC	3 - 3	Wymondham Town LFC (4-2 pens)
Whittlesey Athletic Ladies FC	1 - 3	Peterborough United LFC
Wroxham Women FC	10 - 0	Kettering Town LFC
Bedford LFC	12 - 0	Corby Town Ladies FC
Henley Athletic Ladies FC	4 - 4	March Town United LFC (4-5 pens)
Northampton Town LFC	5 - 0	Haverhill Rovers LFC
Aylesford LFC	1 - 3	Ashford Ladies FC
Dulwich Hamlet LFC	6 - 1	Margate LFC
New London Lionesses LFC	4 - 2	Parkwood Ladies FC
Hastings United LFC	0 - 2	Hackney Women's FC
Runwell Sports Ladies FC	0 - 6	Hacklow Town Ladies FC
Rayleigh Town Ladies FC	W - L	Huddesdon Town Ladies FC
Chelmsford City Ladies FC	3 - 2	Frontiers LFC
Colney Heath LFC	2 - 1	Herts Vipers LFC
Hemel Hempstead Town LFC	1 - 3	Garston LFC
Abingdon Town LFC	0 - 4	Abingdon United Women FC
Banbury United LFC	1 - 2	Swindon Supermarine Women FC
Woodley United LFC	5 - 2	Wargrave Ladies FC
Royal Wootton Bassett T LFC	1 - 1	Brentford WFC (6-7 pens)
Wycombe Wanderers LFC	4 - 0	Oxford City LFC
Eastbourne United Ladies FC	1 - 0	Pagham LFC
Badshot Lea LFC	7 - 3	Oakwood FC Ladies
Mole Valley LFC	0 - 11	AFC Acorns Ladies
Roffey FC Women	1 - 4	Chichester City LFC
Seaford Town LFC	1 - 1	Newhaven LFC (3-1 on pens)
Burgess Hill Town LFC	0 - 10	Saltdean United Ladies FC
AFC Stoneham Ladies	10 - 0	Merley Cobham Sports Ladies FC
Eastleigh LFC	1 - 10	AFC Bournemouth Ladies
Bournemouth Sports LFC	21 - 0	Redlands LFC
Alton LFC	13 - 0	Meon Milton Ladies FC
Longwell Green Ladies FC	2 - 2	Paulton Rovers Ladies FC (5-6 on pens)
FC Chippenham Ladies	0 - 6	Oldland Abbotonians LFC
Downend Flyers LFC	1 - 2	AEK Boco LFC
Bristol Rovers Women's FC	6 - 0	Bristol & West LFC
Banwell LFC	0 - 10	Ilminster Town LFC
St Agnes AFC Ladies	0 - 1	Saltash United Women FC
Marine Acad.Plymouth LFC	21 - 0	Ottery St Mary AFC Ladies
AFC St Austell Ladies	7 - 0	Feniton Ladies FC
Tunbridge We Foresters LFC	1 - 1	Ramsgate FC Women (4-5 on pens)
Herne Bay LFC	5 - 1	Whyteleafe Ladies FC
Stourbridge FC Ladies	8 - 0	Port Vale Ladies FC
Walton Casuals Ladies FC	4 - 0	AFC Littlehampton Ladies

# RWBTFC Men's First Team

Date	Opponents	H/A	Result	Crowd
Tue	01-Sep	Chipping Sodbury(FAC EP)	H	2-2 (4-1 Pen) 181
Sat	12-Sep	Didcot Town (FAC Prelim)	A	
Tue	15-Sep	Easington Sports	A	
Sat	19-Sep	Brimscombe & Thrupp	A	
Sat	26-Sep	Fairford Town	A	
Tue	29-Sep	Longlevens	H	
Sst	10-Oct	Stonehouse Town (FAV2QR)	A	
		Ardley United	A	
		Ardley United	H	
		Binfield	A	
		Binfield	H	
		Bishops Cleeve	A	
		Bishops Cleeve	H	
		Bluefin Insurance Cup Rnd 1		
		Brimscombe & Thrupp	H	
		Burnham	A	
		Burnham	H	
		Easington Sports	H	
		Fairford Town	H	
		Flackwell Heath	A	
		Flackwell Heath	H	
		Floodlit Cup Rnd 1	H	
		Holmer Green	A	
		Holmer Green	H	
		Longlevens	A	
		Lydney Town	A	
		Lydney Town	H	
		Reading City	A	
		Reading City	H	
		Shrivenham	A	
		Shrivenham	H	
		Tuffley Rovers	A	
		Tuffley Rovers	H	
		Virginia Water	A	
		Virginia Water	H	
		Westfields	A	
		Westfields	H	
		Windsor	A	
		Windsor	H	
FAC - FA Cup, FAV - FA Vase			FAC - FA Cup,	

The initial set of fixtures for the UHlsport Hellenic League have been issued for September but could be subject to change due to most of September being taken up with FA competitions.

We were at Dicot yesterday in the Preliminary Round of the FA Cup and by the time you read this we will all know if we are still in the competition.

The initial set of league fixtures sees us play Easington Sports away, in midweek. The first month's fixtures also includes a trip to Fairford for the first time since last season's eventful encounter. Hopefully the game will be less controversial this coming season and Your Sport Swindon are allowed back in.

The other scheduled league fixtures for September sees us make the short trip to Gloucestershire to play Brimscombe & Thrupp, whilst another Gloucestershire side, Longlevens come to the Gerard Buxton Ground on Tuesday 29th September.

# RWBTFC Men's Dev Team

ROYAL WOOTTON BASSETT TOWN FOOTBALL CLUB

SEASON 2020-21 DEVELOPMENT TEAM FIXTURES - CORSHAM PRINT WILTSHIRE SENIOR LEAGUE

Date	Opponents	H/A	Comp	Result	Scorers
Sat 05-Sep-20	Odd Down Res	H	League	W 4 - 3	Richards 2, Ockwell, Gallagher
Sat 12-Sep-20	Melksham Town Res	H	League		
Tue 15-Sep-20	Malmesbury Vics Dev	H	League		
Sat 19-Sep-20	Devizes Town Res	A	League		
Tue 22-Sep-20	Cricklade Town	H	League		
Sat 26-Sep-20	Ludgershall Sports	H	League		
Thur 01-Oct-20	Purton	H	League		
	Corsham Town Res	A	League		
	Corsham Town Res	H	League		
	Cricklade Town	A	League		
	Devizes Town Res	H	League		
	Frome Collegians	A	League		
	Frome Collegians	H	League		
	Ludgershall Sports	A	League		
	Malmesbury Vics Dev	A	League		
	Marlborough Town	A	League		
	Marlborough Town	H	League		
	Melksham Town Res	A	League		
	Odd Down Res	A	League		
	Pewsey Vale	A	League		
	Pewsey Vale	H	League		
	Purton	A	League		
	Shrewton United	A	League		
	Shrewton United	H	League		
	Stratton Juniors	A	League		
	Stratton Juniors	H	League		
	Trowbridge Town	A	League		
	Trowbridge Town	H	League		
	Wroughton	A	League		
	Wroughton	H	League		



## Corsham Print Wiltshire Senior League Premier Division Season 2020-21

As at 9 September 2020							
	Pld	W	D	L	F	A	PTS
1 Wroughton	1	1	0	0	10	0	3
2 Pewsey Vale	1	1	0	0	5	0	3
3 Shrewton United	1	1	0	0	5	1	3
4 Malmesbury Victoria Dev	1	1	0	0	3	1	3
5 Royal W. Bassett Town Dev	1	1	0	0	4	3	3
6 Cricklade Town	1	1	0	0	2	1	3
7 Corsham Town Res	0	0	0	0	0	0	0
8 Devizes Town Res	0	0	0	0	0	0	0
9 Frome Collegians AFC	0	0	0	0	0	0	0
10 Marlborough Town	0	0	0	0	0	0	0
11 Purton	0	0	0	0	0	0	0
12 Odd Down Res	1	0	0	1	3	4	0
13 Trowbridge Town	1	0	0	1	1	2	0
14 Melksham Town Res	1	0	0	1	1	3	0
15 Stratton Juniors	1	0	0	1	0	5	0
16 Ludgershall Sports	2	0	0	2	1	15	0

Includes Saturday 12th September games and the Melksham Town Res v Odd Down Res game scheduled for 10th September 2020.

## Quiz Answers

**Names the Same:** 1. Laura Jefferies 2. Lisa Coe 3. Hannah Gulliver 4. Emma Sykes 5. Maddy Elliott 6. Amber Egerton 7. Holly Baker 8. Mollie Smith 9. Rosie Kirk 10. Grace Eagles

**Famous Fans:** 1. Celtic 2. Liverpool 3. QPR 4. Leicester 5. Leeds Utd 6. Sheff Utd 7. Sheff Wed 8. Chelsea 9. Man Utd 10. Newcastle Utd





# SHEKICKS

WOMEN'S FOOTBALL MAGAZINE



ISSUE #62  
AUG/SEPT 2020  
£3.50

The magazine for women's football

**HEMP IS FLYING HIGH**  
England & Manchester City's speedy young talent Lauren Hemp

**USA'S UNASSUMING NO.1**  
Getting to know two-time world champ Alyssa Naeher

**2020 NWSL CHALLENGE CUP GALLERY**

**SHEKICKS INVESTIGATES**

**WHERE ARE THE BLACK LIONESSES?**  
SHEKICKS asks why there are not more Black England players...

**SWEDE DREAMS**  
CHELSEA CAPTAIN MAGDA ERIKSSON ON GROWING, WINNING & WANTING MORE



Cheer Kicks with Aston Villa's Gemma Davies; Star Six with Arsenal's Lisa Evans; Scotland keeper Shannon Lynn's Safe Hands; Welsh WPL Golden Boot winner Alana Murphy; Banyana Banyana skipper Janine van Wyk; PSV's new Matilda Kyah Simon; Spurs' Kit Graham; West Ham's Maz Pacheco and City's Ellie Roebuck all feature in the Locker Room; plus news, columns & plenty more to help scratch your footie itch...



Published in full colour, She Kicks is a bi-monthly magazine available in both print and digital format. Each issue is packed with News, Features, Photos and Exclusive Interviews with key players, coaches and officials involved in the Women's game within the UK and beyond. The printed magazine can be purchased for delivery direct to your door as a single issue (£4.25) or by annual subscription (£25). For full details how to purchase via their online shop or over the telephone visit their website at [www.shekicks.net](http://www.shekicks.net)

# Women's Football Pyramid

## Step 1

F.A. Women's Super League

## Step 2

F.A. Women's Championship

## Step 3

F.A. Women's National League  
Northern Premier Division

F.A. Women's National League  
Northern Premier Division

## Step 4

Swindon Town FC

F.A. Women's National League  
Division 1 North

F.A. Women's National League  
Division 1 Midlands

F.A. Women's National League  
Division 1 South West

F.A. Women's National League  
Division 1 South East

## Step 5

North West  
Regional  
Women's  
Football  
League  
Premier Div

North East  
Regional  
Women's  
Football  
League  
Premier Div

West  
Midlands  
Regional  
Women's  
Football  
League  
Premier Div

East Midlands  
Regional  
Women's  
Football League  
Premier Div

Southern  
Region  
Women's  
Football  
League  
Premier Div

**South West  
Regional  
Women's  
Football  
League  
Premier Div**

Eastern  
Region  
Women's  
Football  
League  
Premier Div

London &  
South East  
Regional  
Women's  
Football  
League  
Premier Div

## Step 6

Laverstock & Ford, Swindon Spitfires, Swindon Supermarine, Swindon Town Dev

### Feeding to NW Women's Regional Football League Premier Division:

North West Women's Regional Football League Div 1 (North)  
North West Women's Regional Football League Div 1 (South)

### Feeding to NE Regional Women's Football League Premier Division:

North East Regional Women's Football League Div 1 (North)  
North East Regional Women's Football League Div 1 (South)

### Feeding to West Mid Regional Women's Football League Prem Divn:

West Midlands Regional Women's Football League Div 1 (North)  
West Midlands Regional Women's Football League Div 1 (South)

### Feeding to East Mid Regional Women's Football League Prem Divn:

East Midlands Regional Women's Football League Div 1 (North)  
East Midlands Regional Women's Football League Div 1 (South)

### Feeding to Southern Region Women's Football League Prem Divn:

Southern Region Women's Football League Division 1 (North)  
Southern Region Women's Football League Division 1 (South)

### Feeding to SW Regional Women's Football League Prem Divn:

South West Regional Women's Football League Div 1 (East)  
South West Regional Women's Football League Div 1 (West)  
South West Regional Women's Football League Div 1 (North)

### Feeding to Eastern Region Women's Football League Prem Divn:

Eastern Region Women's Football League Division 1 (North)  
Eastern Region Women's Football League Division 1 (South)

### Feeding to London and SE Women's Regional FL Prem Divn:

South East Counties Womens Football League Premier Div  
Greater London Women's Football League Premier Div

## Step 7

FC Calne, FC Chippenham, Highworth T, Marlborough T, Melksham T, Salisbury, Trowbridge Wanderers, Warminster Sky Blues

Various County and other feeder leagues . The 6 leagues that feed into the South West Regional Women's Football League are as follows: Cornwall Women's Football League Division 1, Devon Women's Football League Premier Division, Dorset Women's League, Gloucestershire County Women's Football League Division 1, Somerset County Women's Football League Division 1 and the Wiltshire County Women's Football League.

Wiltshire Clubs at each Step are shown under the Step number.



# Todays Teams



## Royal W. Bassett Town v Ilminster Town

Home Team Squad	No.	Sub
1	Abi Footner	
2	Hannah Gulliver	
3	Amber Egerton	
4	Mollie Smith	
5	Laura Jefferies	
6	Lani Dickinson	
7	Maddy Elliott	
8	Beth Kelloway	
9	Hayley Huckin	
10	Lisa Coe	
11	Grace Eagles	
12	Lara Wilson	
14	Lois Beer	
15	Shannon King	
16	Alice Farnell	
17	Holly Baker	
18	Rosie Kirk	
19	Emma Sykes	
20	Eloise Hayward	
21	Aly Lyons	
22		
23		
24		

Visitors Team Squad	No.	Sub
1	Charlotte Johnson	
2	Dana Andrews	
3	Daisy Charles	
4	Colette Martin	
5	Hannah Billing	
6	Maisie Parker	
7	Sarah Miller	
8	Charlotte Pettinger	
9	Abigail Carslake	
10	Georgia Mann	
11	Georgia Coward	
12	Abigail Bond	
14	Harriet Kelly	
15	Louise Wyatt	
16	Graziely Esperanca	
17	Nicola Johnson	
18	Holly Ward	
19	Lauren Struszczak	
20	Jodie Cornwall	
21	Sian Chapman	
22		
23		
24		

### Dugout Team

Joint Manager: Jonny House  
 Joint Manager: James Goddard  
 GK Coach: Martin Peters

### Dugout Team

Manager: Craig Stuckey  
 Assistant: Sam Clarke  
 Coach: Casper Paine

### Match Officials

Referee:



Mark Niemirski

Assist. Ref (Red Flag):

John Andrews

Assist. Ref (Yellow Flag):

Ted Andrews

### Next Home Games at the Gerard Buxton Sports Ground

Tue 15-Sep-20 v Malmesbury Vics Dev (Corsham Print Wiltshire Senior League) Kick-off 19:45

Next First Team Home Match

Tue 29-Sep-20 v Longlevens (Uhlsport Hellenic League Premier Division) Kick-off 19:45

Next Ladies Home Match

Sun 11-Oct-20 v Keynsham Town Dev (SW Regional Women's League Premier Division) Kick-off 14:00



### SNES SWINDON

38 Havelock St, SN1 1SD. Tel.01793 434 673

### SNES ROYAL WOOTTON BASSETT

111 High St, SN4 7AU. Tel.01793 851 483